

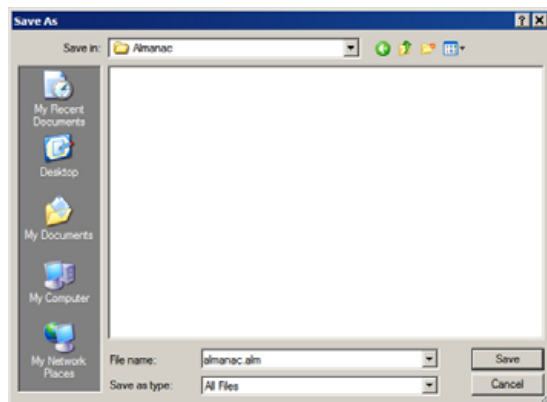
18 June 2007

## Trimble Planning Software: Setup and Configuration

The Trimble® GPS Pathfinder® Office software version 4 no longer contains the QuickPlan™ software. There is a form of planning available in the TerraSync™ software, for use in the field, but Trimble recognises the continued need for you to plot satellite availability and DOPs, and to key-in obstructions. This Support Note explains how to correctly configure Trimble Planning software for use with MGIS field computers.

1. Download the Planning software from [http://www.trimble.com/planningsoftware\\_ts.asp](http://www.trimble.com/planningsoftware_ts.asp) and then install it on your office computer.
2. Download a current almanac:
  - a. Go to <http://www.trimble.com/gpsdataresources.shtml>.
  - b. Right-click *GPS/GLONASS almanac in Trimble Planning file format* and then select *Save Target As* to place the file on your office computer, for example, C:\Almanac:

To ensure that the file is saved as **almanac.alm**, not **almanac.alm.txt**, select **All files** in the *Save as type* field of the *Save as* dialog:



3. Set up a new planning session:
  - a. Start the Planning software.

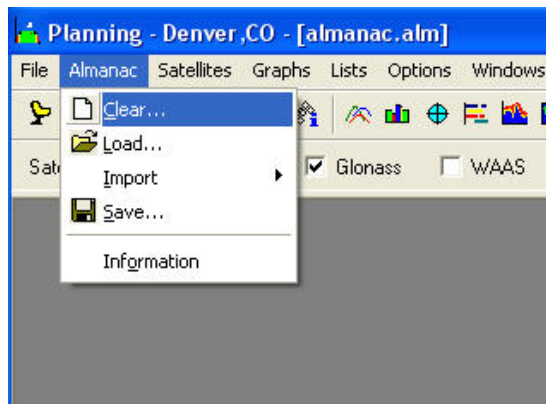
This document is for informational purposes only and is not a legally binding agreement or offer. Trimble makes no warranties and assumes no obligations or liabilities hereunder.

Trimble Navigation Limited, 10355 Westmoor Drive, Suite #100, Westminster, CO 8002, USA

© 2007, Trimble Navigation Limited. All rights reserved. Trimble, the Globe & Triangle logo, and GPS Pathfinder are trademarks of Trimble Navigation Limited, registered in the United States and in other countries. QuickPlan and TerraSync are trademarks of Trimble Navigation Limited. All other trademarks are the property of their respective owners.

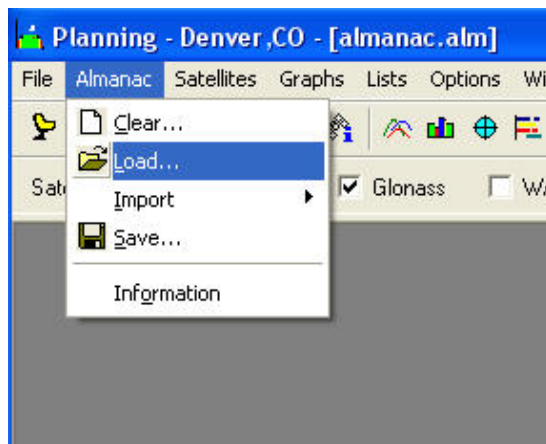


- b. From the *Almanac* menu, select *Clear*, to initiate a new planning session:

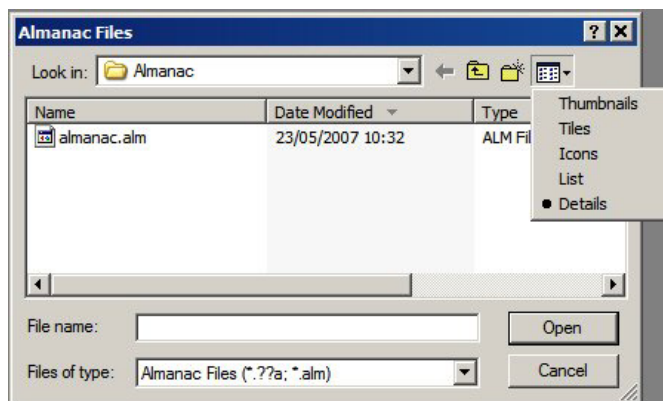


4. Load the new almanac:

- a. From the *Almanac* menu, select *Load*:

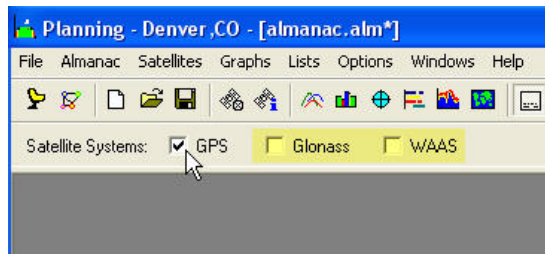


- b. Navigate to the file that you just downloaded. In the *Almanac Files* dialog, select *Details* to view the file list. This way, you can be sure to select the latest file:

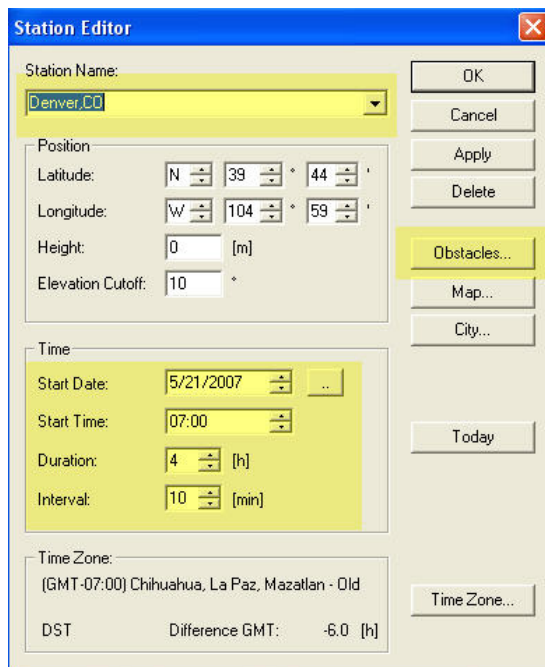


- c. Select the almanac file that you just downloaded and then click **Open**.
- d. When prompted, click **OK**.

- e. In the *Planning* dialog, clear the check boxes for *Glionass* and *WAAS*; these are not required here.



5. Set the current location and time:
- From the *File* menu, select *Station*. A dialog appears.
  - Set the *Station name* and any other details required.
  - In the *Time* group, enter the start date and time, the duration, and the interval for your planning session. To enter the current date in the *Start Date* field, click **Today**.
  - If there are obstacles or obstructions around, you must click **Obstacles** and then enter the details so that the Planning software can take them into account:



- e. Click **Apply** and then click **OK**.

You can now view satellite availability, all DOPs, and the Sky Plot.

**Tip:** To place the DOPs and Visibility windows side by side for printing purposes, select *Windows / Tile Vertically*.

**Note:** If you have your own reference station that produces a *current.ssf* file, you can still use it with the Planning software. From the *Almanac* menu, select *Import / SSF*.